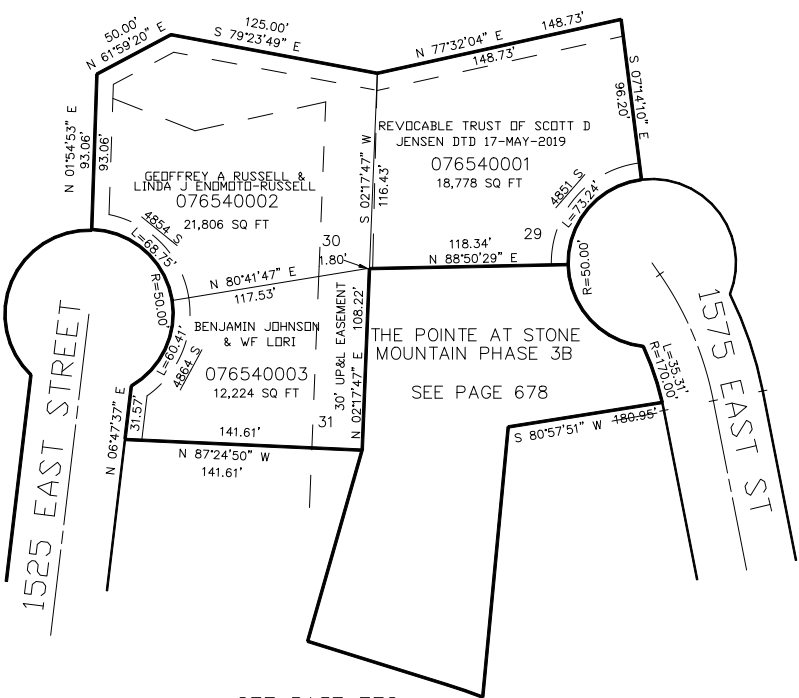


PART OF THE N.1/2, OF SECTION 15, T.5N., R.1W., S.L.B. & M.  
THE POINTE AT STONE MOUNTAIN PH. 3  
AMENDED LOTS 29-32

TAXING UNIT: 25

IN OGDEN CITY  
SCALE 1" = 60'

SEE PAGE 12



SEE PAGE 560

SEE PAGE 559

SEE PAGE 678

SEE PAGE 559

10' UTILITY & DRAINAGE EASEMENTS EACH  
SIDE OF PROPERTY LINES AS INDICATED  
BY DASHED LINES EXCEPT AS OTHERWISE  
SHOWN.

FOR COMPLETE ENG DATA SEE  
ORIGINAL DEDICATION PLAT IN  
BOOK 60, PAGE 40 OF RECORDS.